



# NEWS

**MAY 2015**

7704 Birch Bay Drive  
Blaine, WA 98230  
(360)371-7122

[BBLPNEWS@BIRCHBAYLEISUREPARK.COM](mailto:BBLPNEWS@BIRCHBAYLEISUREPARK.COM)

The News may be viewed on line at: [www.birchbayleisurepark.com](http://www.birchbayleisurepark.com)

Editor: Debbie Stewart

## WELCOME BACK!

Be sure to check out the calendar for all of this year's events!



**BIRCH BAY LEISURE PARK 2015 CALENDAR OF EVENTS – Subject to Change**

	DATE	FUNCTION	PLACE	TIME	CONTACT	SITE NO.
<b>MAY</b>	9	Board Meeting	ELM	9:00 am		
	16	Pancake Breakfast	ELM	8 to 11 am	Wes Gmur	31-07
	16	Balloon Sale	OFFICE	8:30 am - ?	Linda Cholette	52-05
	16	BINGO	ELM	7:30 pm	Dean MacKinnon	53-03
	17	Town Hall Meeting	ELM	10:00 am		
	17	Caesar Sunday	ELM	2 to 6 pm	Lori Taggart & Laurel Miller	09-12
	24	Circle Rep Meeting	BRIER	10:00 am		
<b>JUNE</b>	13	Board Meeting	BRIER	9:00 am		
	20	BINGO	ELM	7:30 pm	Dean MacKinnon	53-03
	20 & 21	Birch Bay Kite Festival				
	28	Circle Rep Meeting	ELM	10:00 am		
<b>JULY</b>	03	BINGO	ELM	7:30 pm	Dean MacKinnon	53-03
	04	Pancake Breakfast	ELM	8 to 11 am	Wes Gmur	31-07
	11	Board Meeting	BRIER	9:00 am		
	18	Sports Day	Circle 17	10:00 am	COORDINATOR	
	18	BINGO	ELM	7:30 pm	Dean MacKinnon	53-03
	18 & 19	Birch Bay Sandcastle Competition				
	25	BBLP BASEBALL BUS TRIP MARINERS VS. BLUE JAYS	ELM	BUS LEAVES 10:00 am SHARP!	Marilyn Sanders	CW -20
	26	Circle Rep Meeting	BRIER	10:00 am		
<b>AUGUST</b>	1	Balloon Sale	BBLP Site	9:00 am	Linda Chollette	52-05
	1	BINGO	ELM	7:30 pm	Dean MacKinnon	53-03
	2	Kids Day at the Pool	BRIER	10:00 am	COORDINATOR NEEDED	
	8	Board Meeting	BRIER	9:00 am		
	15	Volunteer Appreciation	BRIER	2:00 PM	Karilee Green	20-08
	22	Golf Tournament	Dakota Creek & Elm	7:00 am	Wes & Carol Gmur	31-07
	23	Circle Rep Meeting	BRIER	10:00 am		
	29	Birch Bay Discovery Days Parade	Birch Bay Drive	11 am	FLOAT COORDINATOR NEEDED	
	29	Bike Parade	BRIER	1 pm	COORDINATOR NEEDED	
<b>SEPTEMBER</b>	5	Pancake Breakfast	ELM	8 to 11 am	Wes Gmur	31-07
	5	BINGO	ELM	7:30 pm	Dean MacKinnon	53-03
	6	AGM	Blaine Performing Arts Center	9:30 am		
	6	Caesar Sunday	BRIER	2 to 6 pm	Wes & Carol Gmur	31-07
	27	Circle Rep Meeting	BRIER	10:00 am		
<b>DECEMBER</b>	31	NEW YEARS DANCE – The MAC DADDY BAND	ELM	TBA	Wes & Carol Gmur	31-07

## WELCOME TO THE SEASON OF 2015



Welcome back to members, guests and friends to the season of 2015 in Birch Bay Leisure Park. Change is in the air.

Our General Manager of 8 years, LeRoy Smith, will be retiring this summer. We have just announced that our Interim General Manager, Don Brown, has been appointed as our incoming General Manager. Don is busy planning the various projects for his team over the coming summer. You will be hearing more about the priorities of his team at our Open Board Meetings and through various reports in the newsletter and email blasts.

Deborah Johnson, as Office Manager, will be seeing her role evolve as Don and Deborah consider how they share the duties of running Birch Bay Leisure Park. You will also be hearing about staff being hired for the season to augment our core employees. We have some initiatives under way to upgrade the skills of key staff by training for first aid and safety. As you may know, Betty Troup retired recently to enjoy a well-deserved break.

We are looking forward to the calendar of events being produced by Recreation & Entertainment Director, Karilee Green, and her dedicated group of volunteers. There are always opportunities for the helping hands of volunteers, whether you have a desire to assist with activities for children, or imagine yourself as a creative force with managing adult social events. If you have never volunteered before and believe this is the year for you to try your hand at helping out just go to the Administration Office and check out the various opportunities for you. We are also seeking volunteers to sit on various committees that are looking to shape the future of the Park – Rules and Regulations Task Force and the Long Range Planning Committee.

We are also anxiously awaiting the opening of Brier Center and all the possibilities that having a newly refurbished club house will pose for us.

We have had a fairly mild winter and as a result the grass has already been cut several times and the gardens are a riot of colour and blooms. Jan Faulkner has commenced his inspection of sites to continue to allow us to maintain and upgrade the look of our Park.

The season is off to a quick start with the Townhall Meeting, Pancake Breakfast and Caesar Sunday all on the calendar. So welcome back and prepare to enjoy your summer season with guests and friends, renewing old acquaintances and making new ones.

Coleen Hunter  
TR-7

### **Home Made Bird Feeder**

All you need is some Floral Wire, Cheerios and whatever else your imagination can think of. Cut of a piece of the wire and let the kids thread on the Cheerios. Tie the ends together and form into whatever shape you may want (hearts are popular!). Add a pretty ribbon or string and hang from a tree branch. Have fun watching the birds enjoy their special treat!



The **Shop** is "A Whale of a Place to Go!"



4825 Alderson Road - by the bridge on Birch Bay Drive  
 Open Friday Evenings & Weekends from May 8th to June 12th  
 Open 11am-10pm Daily June 19th to Sept. 7th

## Leisure Park & The C Shop Summer Fun in the Sun since 1971!

### The Café & Pizza

#### Scratch Bakery

White & 100% Whole Wheat Loaves · Burger Buns · French Bread  
 Sticky Buns · Cinnamon Rolls · Cookies · Brownies

#### Quality Deli

Sandwiches made to order on Homemade Bread · Panini · Wraps  
 Clam Chowder · Fresh Salads · Hot Dogs

#### Brick Oven Pizza

Made from Scratch—Available all day long!

#### Ice Cream Treats

Shakes · Malts · Sundaes · Ice Cream Cones · Old-Fashioned Sodas  
 Banana Splits · Home-roasted Coffee · Espresso Drinks

Coffee is Roasted by Pat & Ground Fresh for each pot!

### The Candy Shop

#### Homemade Candy

Caramel Apples · Fudge · Peanut Brittle · Carmelcorn · Divinity  
 Marshmallow · Almond Butter Toffee

#### Homemade Specialties

Dreams · Peanut Butter Yumms · Almond Boats · Clam Shells · Mint Sundae  
 Salt Carmels · Seafoam · Snow Cones · Cotton Candy · Cheesecorn

#### And More

Hard Ice Cream Cones · Jelly Belly Beans · Licorice  
 Sugar Free Candies · Salt Water Taffy

Free treat for You on your Birthday & Wedding Anniversary



Limit one item per person per month, please.



May Candy Shop:  
 BOGO Peanut  
 Butter Yumm



May Café & Pizza:  
 BOGO  
 Cinnamon Roll



June Candy Shop:  
 44 Birthday  
 Jelly Belly Beans



June Café & Pizza:  
 25% Off Any Pizza



July Candy Shop:  
 BOGO  
 Carmel Apple



July Café & Pizza:  
 Half Off Any  
 Loaf of Bread



August Candy Shop:  
 BOGO  
 Carmel Corn



August Café &  
 Pizza:  
 BOGO Hot Dog



Sept. Candy Shop:  
 BOGO  
 Snow Cone



Sept. Café & Pizza:  
 BOGO Brownie

Clip & Save each month with these C Shop Coupons!





## General Manager's Report May 2015

Hello Members,

Birch Bay Leisure Park! What a wonderful place! I'm excited to be your new general manager. My name is Don Brown. I was born in Seattle and moved to Birch Bay onto family land in 1970. I graduated from Blaine High in 1982. In 2003 I graduated from Rutgers' Cooke College. I started working here in 2013. Starting in the Maintenance Department I progressed through the position to reach Operations Manager last year. Then with further support of the Members, Coworkers, and Management; I am now blessed with serving you all as General Manager.

I have been learning everything I can about the infrastructure, administration, and of course the operations of BBLP. My goal is to continue helping guide the projects that are set forth to enhance the park and member experience here at BBLP. I know for many of you this is your Home Away from Home. I want to ensure that not only is BBLP home away from home, but it's also a unique holiday experience that you remember for years to come. As I have met many of you, I have always enjoyed the stories of how families are rooted deep within the park history. I look forward to meeting all of you and hearing many more of these stories.

As we get further into spring some of the opportunities coming up are as follows:

- Enhanced Safety and Security for the members and staff
- Bocce court upgrades
- Continued improvements on the road infrastructure
- Finish enhancement upgrades of recycling locations
- Opening of the remodeled Brier Center

One of the biggest opportunities for improvement that we can make an immediate impact as a team is obeying the speed limit through the park. The posted speed limit is 5mph/8kph. The children are relying on you to keep them safe!!! This will be an exciting year, and I look forward to seeing you around the park.

Don Brown, General Manager



*BEACH BASKET YARNS  
& Gifts*

Mary Muncy – Owner

Hours                      7620 Birch Bay Drive  
Mon-Sat 11-5              Birch Bay, WA 98230  
Sunday 11-4                360-371-0332

Knit and Crochet Classes

[beachbasketyarns@comcast.net](mailto:beachbasketyarns@comcast.net)

Experience is something you don't get until just after you need it.

Generally speaking, you aren't learning much when your lips are moving.

If you tell the truth, you don't have to remember anything.

Always remember you're unique. Just like everyone else.

**IRS Rules for Canadians Dealing with the USA**  
**Presented By Steve Lake**  
**May 2015 Update**

The following is general advice. For your personal circumstances you should review them with your professional advisor before proceeding with any related major decision.

**8840**

Effectively July 1, 2014 the USA Border Guards know how long you have been in the USA (this program is still not official yet even though it was supposed to be fully operational almost 1 year ago). Both borders can push a button and know this fact instantly. Note: British Columbia has been the pilot study for this system since, at least, January 1, 2014. This is a warning for those of you who go beyond legislated time periods and don't do the proper filings with the IRS. Did you know that not filing gives that border guard the power to ban you from the USA for up to 10 years with very little chance of recourse? Think about the impact – e.g. You cannot return to your trailer to remove personal effects or be there to sign the sale documents.

An 8840 (google IRS forms 8840, there are forms and explanations there) needs to be filed to demonstrate **substantial presence** in Canada despite the fact that you have been in the USA more than 182 days according to the formula. Every year you should be documenting the days in the year that you are in the USA.

E.G. You are filing your 2013 8840 form **due June 15**. And your documented days in the USA are as follows:

2012 was 126 days, 2013 was 123 and 2014 was 140 days

The formula is applied 1/6 for 2012, 1/3 for 2013 and 100% for 2014. The result is 21, 41 and 140 which totals 202 days. You are offside and must file the form 8840.

Don't panic, this form demonstrates that the IRS is not after travelers that are retired, not working and don't invest significantly in the USA. You must answer a series of questions and **not** do a tax return. Such questions include: Where do you bank? Where is your car registered? Do you belong to a National Health Plan in a foreign country? It is relatively easy to complete. Failure to file can put you in the position of being deemed a US resident and you do not want to be deemed a US resident. Or you can be banned from the USA.

Beware that you do not want to exceed 182 days in the USA in any 1 year without applying the formula. It is possible that you could be deemed to be a US resident and be required to file a personal tax return for the IRS. You do not want to be in this position.

**Remember if you should have filed form 8840 and didn't you are in a very precarious position vis-à-vis the IRS. If you lie to the Border Security Guard it is also possible to be banned.**

**New Rules**

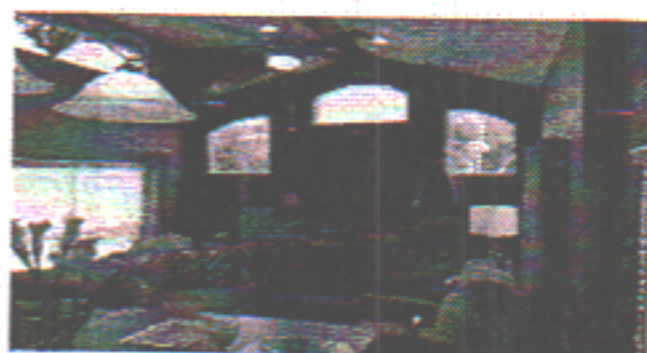
In addition to the above change for the Border Guard information, there are 3 law changes, 2 ratified and another one which we are expecting to be ratified soon:

1. Still yet to be ratified is the most important of all – Canadians 55 and over, not working in the USA, will be permitted to be in the USA for up to 8 months in any 1 year without (normally!) creating problems. The Senate has already passed this bill unanimously while we await Congress's vote. This vote to approve was expected nearly a year ago. Even though the Republicans have indicated that they will approve this bill it is them who have held it up for over 2 years!
2. Guess what, the American IRS is going to get into the pockets of Canadian residents effective July 1, 2014. The Agreement has been signed by Canada and USA as well as other Western countries and the USA. If you are an American citizen with investments in any Canadian financial institution that institution must provide personal investment information to the IRS. If the person refuses to provide the information the IRS is empowered to have the financial institution withhold a 30% tax on the investments' earnings. If you are a deemed USA resident, although consider yourself a Canadian, you can also be treated the same way.
3. British Columbia's Medical Plan now permits you to be out of BC for 7 months in any calendar year without interfering with our normal medical coverage. Beware that this 7 months includes other provinces. E.g. if you were out of BC 7 months and 1 day, or more, you would not be able to go home and have life-saving surgery without paying for it!

Spring Fever! Lot Models ready for immediate delivery. Or FREE cabinet upgrade or fireplace with new order. Best Selection in Whatcom County.



Family owned & operated 18 years in same location.



## Oak Creek Homes

7324 Guide Meridian, Lynden WA 98264

(360) 354-8577

[www.oakcreekhousing.com](http://www.oakcreekhousing.com)

Price includes normal Delivery & Set-Up  
Starting at \$39,900

Single, Double, X-Tall  
and Non-Lofts  
Shingle or Metal Roofs Dry-  
wall or Vinyl walls



Choose from loads of  
upgrades  
Hardi, Lap, Cedar  
or Smart Panel Siding



BLAINE-BIRCH BAY  
PARK & RECREATION  
DISTRICT 2

*Serving Blaine & Birch Bay*

Bay Horizon Park • 7511 Gemini Street • Birch Bay



Basketball • Pickleball • Badminton • Ballroom Dancing  
Volleyball • Yoga • Karate  
Zumba®, Zumba® Step & Zumba® Toning • Line Dancing

For activity schedule, call 360.656.6416 or visit  
[www.blainebirchbayparkandrec.org](http://www.blainebirchbayparkandrec.org)

Spring Fever! Lot Models ready for immediate delivery. Or FREE cabinet upgrade or fireplace with new order. Best Selection in Whatcom County.



Family owned & operated 18 years in same location.



## Oak Creek Homes

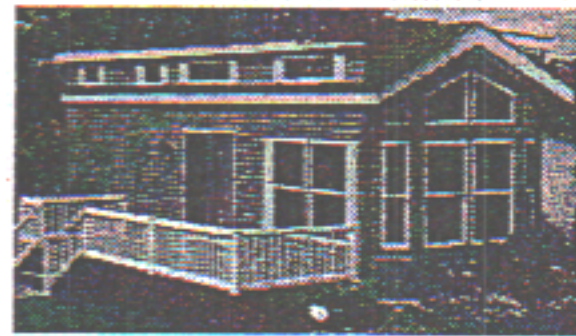
7324 Guide Meridian, Lynden WA 98264

(360) 354-8577

[www.oakcreekhousing.com](http://www.oakcreekhousing.com)

Price includes normal Delivery & Set-Up  
Starting at \$39,900

Single, Double, X-Tall  
and Non-Lofts  
Shingle or Metal Roofs Dry-  
wall or Vinyl walls



Choose from loads of  
upgrades  
Hardi, Lap, Cedar  
or Smart Panel Siding



BLAINE-BIRCH BAY  
PARK & RECREATION  
DISTRICT 2

*Serving Blaine & Birch Bay*

Bay Horizon Park • 7511 Gemini Street • Birch Bay



Ball • Pickleball • Badminton • Ballroom Dancing

• Tai Chi • Tai Ji • Tai Chi • Tai Chi

• Zumba • Toning • Line Dancing

For activity schedule, call 360 350 6416 or visit

[www.blainebirchbayparkandrec.org](http://www.blainebirchbayparkandrec.org)



**Blaine-Birch Bay Park & Recreation Calendar**

**May 2015**

<b>MONDAY</b>	<b>TUESDAY</b>	<b>WEDNESDAY</b>	<b>THURSDAY</b>	<b>FRIDAY</b>	<b>SATURDAY</b>
				<b>1</b> Zumba 9:00 Pickleball 10:30 Children's Activities 2:30 Open Gym 5:30	<b>2</b> Zumba 9:00 Pickleball 10:00 Open Gym 2:00
<b>4</b> Zumba 9:00 Pickleball 10:30 Children's Activities 2:30 Line Dance 5:30 Pickleball 6:30	<b>5</b> Yoga 10:00 Pickleball 11:30 Karate 4:30 Zumba 6:15 Ballroom 7:30	<b>6</b> Zumba 9:00 Pickleball 10:30 Children's Activities 2:30 Open Gym 5:30	<b>7</b> Line Dance 9:00 Pickleball 10:30 Home Connections Rental 2:00 Karate 4:30 Yoga 6:15	<b>8</b> Zumba 9:00 Pickleball 10:30 Children's Activities 2:30 Open Gym 5:30	<b>9</b> Zumba 9:00 Pickleball 10:00 Open Gym 2:00
<b>11</b> Zumba 9:00 Pickleball 10:30 Children's Activities 2:30 Line Dance 5:30	<b>12</b> Pickleball 11:30 Karate 4:30 Ballroom 7:30	<b>13</b> Zumba 9:00 Pickleball 10:30 Children's Activities 2:30 Open Gym 5:30	<b>14</b> Line Dance 9:00 Pickleball 10:30 Home Connections Rental 2:00 Karate 4:30 Yoga 6:15	<b>15</b> Zumba 9:00 Pickleball 10:30 Children's Activities 2:30 Open Gym 5:30	<b>16</b> Zumba 9:00 Pickleball 10:00 Picnic in the Playground 11:00 Open Gym 2:00
<b>18</b> Zumba 9:00 Pickleball 10:30 Children's Activities 2:30 Line Dance 5:30	<b>19</b> Pickleball 11:30 Karate 4:30 Ballroom 7:30	<b>20</b> Zumba 9:00 Pickleball 10:30 Children's Activities 2:30 Open Gym 5:30	<b>21</b> Line Dance 9:00 Pickleball 10:30 Home Connections Rental 2:00 Karate 4:30 Yoga 6:15	<b>22</b> Zumba 9:00 Pickleball 10:30 Children's Activities 2:30 Open Gym 5:30	<b>23</b> Zumba 9:00 Pickleball 10:00 Open Gym 2:00
<b>25</b> Zumba 9:00 Pickleball 10:30 Children's Activities 2:30 Line Dance 5:30	<b>26</b> Pickleball 11:30 Karate 4:30 Ballroom 7:30	<b>27</b> Zumba 9:00 Pickleball 10:30 Children's Activities 2:30 Open Gym 5:30	<b>28</b> Line Dance 9:00 Pickleball 10:30 Home Connections Rental 2:00 Karate 4:30 Yoga 6:15	<b>29</b> Zumba 9:00 Pickleball 10:30 Children's Activities 2:30 Open Gym 5:30	<b>30</b> Zumba 9:00 Pickleball 10:00 Open Gym 2:00

\*\* Please note: May 3, 10, 17, 24, 31 9:00am-Noon Water's Edge Church

Sunday May 3, 10, 17, 31 4:00 Badminton

For More Information: Birch Bay Activity Centre 360-656-6416 [www.blainebirchbayparkandrec.org](http://www.blainebirchbayparkandrec.org)

## MAY RECIPE TATER TOT PIE

3 tablespoons Olive Oil  
 1 ½ pounds lean hamburger  
 2 teaspoons Worcestershire  
 ½ teaspoon paprika  
 Salt & Pepper to taste  
 2 tablespoons tomato paste  
 ½ cup beef stock  
 1 small onion, chopped  
 Handful mushrooms, sliced  
 2 carrots, peeled and grated  
 2 zucchinis, cut into strips  
 1 red bell pepper, cut into strips  
 8 ounce grated cheddar cheese  
 1 – 32 ounce bag frozen tater tots

Add oil to pan over medium heat. Add hamburger, Worcestershire, paprika, salt and pepper, cook until hamburger is cook through. Stir in tomato paste and mix together well. Add stock and bring to a simmer. Using a slotted spoon layer hamburger mixture in the bottom of a 9x13 baking dish.  
 In the same pan add the onions and mushrooms and cook until onion is almost tender. Add the carrots, zucchini and pepper, cook until tender but still crisp. Layer the vegetable mixture over the beef.  
 Sprinkle on the grated cheddar cheese.  
 Layer the tater tots on top of the cheddar cheese in neat rows. Sprinkle with extra paprika. Bake in 350 degree Oven for 25 – 30 minutes.

### EARTH DAY WORD SEARCH

E	D	R	L	E	H	I	D	V	J	F	N	L	W	E	S	S	H
B	K	I	I	A	Q	L	E	O	W	D	A	D	D	T	O	A	Y
C	Q	A	C	V	K	T	S	L	S	V	C	R	J	Y	I	M	L
O	O	O	U	E	E	E	E	C	A	N	C	D	R	M	L	F	U
V	C	N	A	Q	B	R	R	A	O	I	V	R	A	T	J	E	E
J	S	E	T	T	H	E	T	N	U	A	R	G	E	Q	V	E	Y
S	C	E	A	I	M	T	R	O	U	R	M	F	D	T	C	W	L
C	H	A	P	N	N	M	R	G	N	A	J	G	P	G	A	I	X
Z	Q	V	V	S	H	E	X	A	K	T	F	W	D	J	O	W	O
K	C	A	H	R	S	I	N	C	E	Q	R	U	C	Y	B	L	Z
T	S	E	R	O	F	A	O	T	M	O	U	N	T	A	I	N	D
U	W	O	R	L	D	R	R	L	D	E	G	B	P	H	T	P	D
I	V	Z	M	E	E	R	T	G	F	R	F	V	L	O	Z	K	F

CONTINENT  
 SOIL  
 MOUNTAIN  
 GRASS

FOREST  
 WATER  
 RIVER  
 LAVA

ICEBERG  
 DESERT  
 TREE  
 OCEAN

MAGMA  
 GOLD  
 WORLD  
 ROCK

RAIN  
 LAKE  
 EARTHQUAKE  
 VOLCANO

Earth Day



## FROM THE ADMINISTRATION CENTER

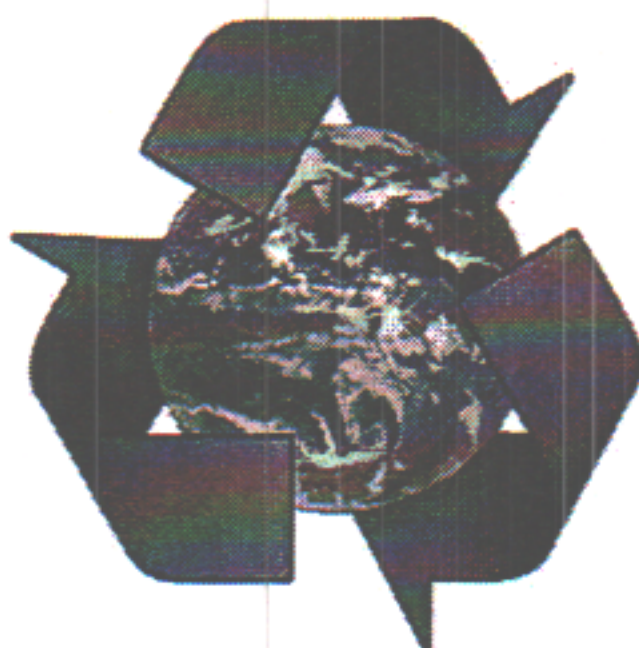
Spring at last. Spring at last. Spring at last! Not that we've had a bad winter mind you. To those new members, celebrating their first season with us, We shout out a hearty, "Welcome aboard!" Here are some of the services offered by the park and your staff.

**Propane Tanks** - We fill your small propane tanks. At the Admin Center - between the recycling bins and the dirt - is the propane filling station. Tanks left on the 'EMPTY' side by 4:00pm will be ready for pickup by 4:30pm on the 'FULL' side. That is the sequence that fulfills your propane needs - and your tank for that matter. Please be sure that your tank is clearly marked with your site number.

**Topsoil & Gravel** - We load our vehicle with 3-way topsoil, limestone, or chipped rock. Or you may purchase these commodities by the 5 gallon bucket or wheelbarrow (you fill). We usually keep less than 10 yards of these commodities in stock, so if you need more than a yard or two you should contact a supplier.

**Brush Bins** - Each bathhouse has a brush bin for small bundles and bags of yard waste ONLY. Compost bags are available at the office, five for \$2.00.

**Garbage** - Please place bagged, household garbage in the dumpsters located at the bathhouses and at the front of the park. To dispose of larger items (carpet, mattresses, furniture, etc.) please stop by the office to purchase a dump permit to visit the "landfill". The cost is \$20 and is good for 10 days.



**Recycling** - Please recycle. Aluminum cans (preferably crushed) go in the recycling shed. Newspapers, mixed paper, cans & jars go in bins in front of the shed. Please flatten plastic jugs. Cardboard goes in the bin inside the recycling shed at the front. Please flatten. Additional recycling locations are: Bath House #3, #4, #5, #6, #7, #8 #9, #10 - Brier Center and Elm Center. Further details about recycling are available at the administration office.

The "Spring Clean Up" bin will arrive on April 30th and be hauled away on May 13th. Site waste only, outside waste is not allowed into the park.

We encourage our members to take part in the Balloon Sale on May 16th. One man's trash is another man's treasure. Recycle. Re-purpose. Re-Use!



**Laundry** - Bathhouses 3, 4, 8 & 9 have coin operated washers and dryers. (\$2.25 US to wash & \$1.00 US to dry)  
**Please, no Canadian coins.**

**Utilities** - We respond to your water, power and sewer problems. If it's a park problem we fix it. If not, then we have enough experience to point you toward a solution. Please be aware of the delicate disposition of our sewer system. Sewage is pumped out of the park and our pumps choke on the smallest of things; a dish rag, that messy diaper (even a supposedly disposable diaper), a potted plant with its roots, a knife. When these things reach the pump, someone has to go down there and clear them. Let's just say that's disgusting.

**Compressed Air** - Outside the shop door, we provide compressed air for your flat tires.

**Construction / Maintenance Permit** - All construction requires a permit. The applications are available at the Administration Center.

**Mail & Parcels** - Please stop by the Administration Center to pick up your mail and parcels to make room for more.

**birchbayleisurepark.com** - We maintain a webpage (<http://www.birchbayleisurepark.com>). It contains the events calendar, by-laws/rules & regulations, board minutes, messages from board members, for sale lists, this newsletter and a raft of spiffy things to know.

Be safe. Have fun. Be kind to each other.

*BBLP Administration*

# **BBLP Bus Trip to Safeco Field**

**Saturday, July 25th**

 **MARINERS** **vs**  **TORONTO BLUE JAYS**

**Reserve Tickets for Your Group Today!**

**Tickets are \$75 USD - Must be Legal Drinking Age  
Price Includes Transportation & One Ticket to the Game  
Bus leaves from the BBLP Elm Center at 10AM Sharp!!**

**Game Time is 1:00**

**Beer Sales and 50 /50 Drawings on the Bus**

**All reservations must be paid in  
full by June 15th.**

**For more information contact the BBLP Admin Office at  
[birchbayleisurepark@comcast.net](mailto:birchbayleisurepark@comcast.net) or (360) 371-7122  
Coordinator: Marilyn Sanders CW-20**

**Birch Bay Leisure Park  
Election of a Treasurer  
For the 2015-2017 Fiscal Years  
AGM - September 6, 2015**

Steve Lake is retiring after three years as Treasurer. Qualified members are encouraged to submit their application.

**The role entails the following responsibilities:**

- Chair of the Finance Committee – twice a year the budget is reviewed – at the end of October for the following year and at the beginning of May for the following 6 months. Semi-annual dues setting takes place as part of these reviews. The Finance Committee currently has 3 supporting volunteers.
- Monthly reporting for Board meetings of any significant financial matters. This includes Variance Reporting for the month just completed. These written reports become part of the minutes reported to the Members.
- Participation on the HR and Compensation Committee which includes the President and the Park's GM. In December each year staff performances are reviewed and raises and bonuses determined. This Committee is also responsible for hiring and firing although significant decisions are approved by the Board.
- Cheque signing officer along with designated Board members.
- Review and approval of all invoices for payment, sometimes after the fact.
- Direction provided to BBLP Office Manager/In House Accountant.
- Direction provided to BBLP General Manager, in conjunction with the Board Chair – ensuring Board policies are being followed and providing support for daily activities.
- Presentation at the Town Hall Meeting in May each year providing financial update.
- Presentation at the Annual General Meeting providing financial update.
- Providing reports for our monthly newsletter when published – May to September.
- Providing reports for the occasional email blast to members.

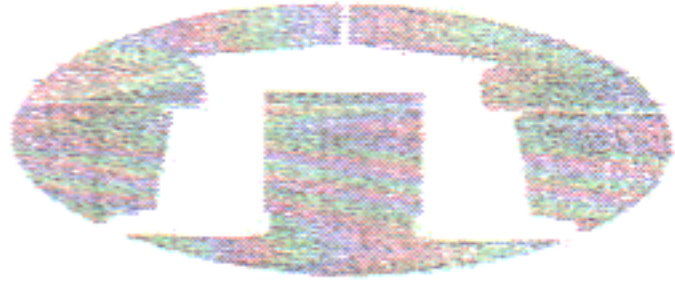


**Skill Set**

- Ideally a professional accountant but not required. Other appropriate occupations include banker, business owner, investment banker, lawyer, economist, mortgage broker, real estate and /or bookkeeper. But it is important to have good business sense.
- Prior board experience and/or experience working on or with a strata council.
- Good understanding of parliamentary procedure and Robert's Rules of Order.
- Related experience with compensation and employee benefits plans is an asset.
- Don't forget that you will have the support of the professionals of a good Finance Committee.
- You will also have the support of a good In House Accountant.

**Perks**

- Each Director receives an annual expense allowance of \$240.
- The Treasurer receives a semi-annual 50% discount on all dues and surcharges.
- Steve Lake, the current Treasurer, is willing to serve the following year on the Finance Committee to provide support. He is also willing to help with or do the presentations for the Town Hall Meeting and AGM if necessary.



# Blaine Insurance

*Proud to be a part of the Peace Arch history.*

- Auto
- Home
- Mobile Home
- RV's
- Marine

**Safeco** Insurance

TRAVELERS

**PROGRESSIVE**

**FOREMOST**  
INSURANCE GROUP

**THE HARTFORD**

American Modern

American Bankers

American Reliable

**(360) 332-7300 / (800) 795-7301**

838 Peace Portal Drive Blaine WA 98230

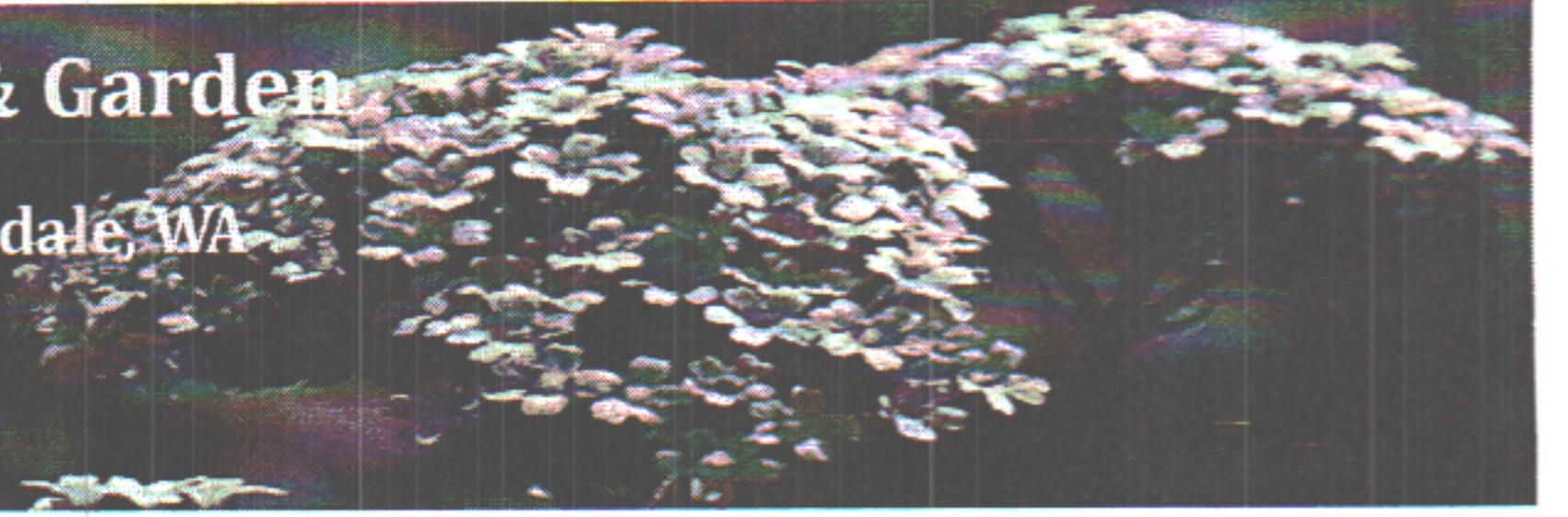
Or visit us online at: <http://www.blaineinsurance.com>

## MAY TRIVIA

- 1) What was the name of the mischievous puppy in the Disney movie Lady and The Tramp?
- 2) Name 3 Elvis Presley moves with a geographical location in the title.
- 3) This woman is a movie star, singing star and was Miss America in 1984 – Who is she?
- 4) Academy Award winners for Best Supporting Actresses – Identify their movies:
  - a) 2011 Octavia Spencer
  - b) 2006 Jennifer Hudson
  - c) 1961 Rita Moreno
  - d) 1939 Hattie McDaniel
- 5) In which sport do people compete for the “America’s Cup”?
- 6) The Wizard of Oz:
  - a) What was the name of the character, first and last, played by Judy Garland?
  - b) What was the name of the City where the wizard lives?
  - c) Which person was originally intended by the Studio to play the lead role?
- 7) Can you name two Olympic sports beginning with the letter “F”
- 8) On February 3, 1959 three beloved rock & roll music artists died in a cold, wintry Air crash, who were they?
- 9) Which two actors starred in the film role as the “Nutty Professor”?
- 10) Which three comedic actors starred in the 1985 film, “The Three Amigos”?

**Portal Way Farm & Garden**

6100 Portal Way Ferndale, WA



**The Greenhouse is FULL!**

**Beautiful Hanging Baskets**

AND

**Color Pots**

**Joe's Vegetable Starts**

*Bedding Plants – Perennials – Shrubbery*

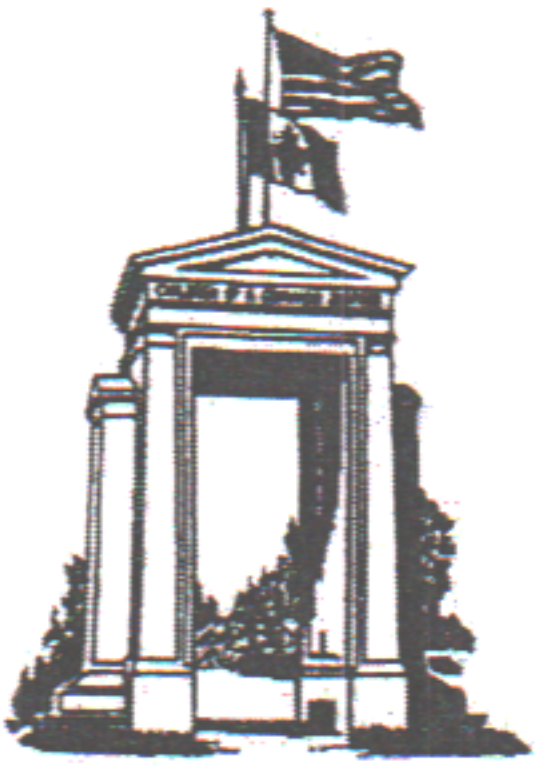
**Everything you need for your yard & garden**

**20% off**  
Hummingbird  
Feeders



**20% off**  
Finch Feeders

10# Nyjer Seed  
**\$9.99**



# AMERICAN LEGION

## Peace Arch Post #86

4580 Legion Dr | Blaine, Washington 98230

(360) 371-7311 | Fax: (360) 371-5242

Email: peacearch.wapost@verizon.net



Open Tuesday through Sunday  
Dancing | Bingo | Meat Draw every Friday/Saturday  
Friday Night Joker Poker | Pick Eight | Bingo Night

### May Events:

- 1<sup>st</sup> - First Friday of the month - **Steak Night**
- 8<sup>th</sup> - Second Friday of the month - **Burger Night**
- 15<sup>th</sup> - Third Friday of the month - **French Dip w/ salad & chips**
- 22<sup>nd</sup> - Fourth Friday of the month - **Burger Night**
- 29<sup>th</sup> - Fifth Friday of the month - **Chef's Surprise**
- Every Sunday Meat Draws

### Call for more information

Open Saturday & Sunday 12 noon - Whenever  
Tuesday through Friday 2pm - Whenever

**Open to all Veteran organization members & their guests**

#### ACROSS

1. "The Big \_\_\_\_\_ Theory"
5. Actress & Director \_\_\_\_\_ Ullmann
8. Ms. Samms
9. Huge worldwide aluminum company
12. "\_\_\_\_\_ Gold"; Peter Fonda film
13. Happy, Dopey, Doc & Others
14. Groucho, Chico, Harpo, Gummo or Zeppo
15. \_\_\_\_\_ Danza
16. German article
18. "\_\_\_\_\_ walked out in the streets of Laredo..."
19. Affleck and Stein
20. "The King \_\_\_\_\_"; Yul Brynner film
21. "The Sonny and \_\_\_\_\_ Comedy Hour"
23. "Touched by an \_\_\_\_\_"
24. Car from Germany
25. Fey for "30 Rock"
26. Charlton Heston's role in "The Ten Commandments"
28. Designer Cassini
29. Rather and Aykroyd
30. Nabors and Belushi
32. Arden of "Our Miss Brooks"
35. NNW plus 180 degrees
36. "Well, here's another nice \_\_\_\_\_ you've gotten me into." (Ollie)

#### ACROSS

37. "It's \_\_\_\_\_, Mad, Mad, Mad World"
38. Still existing, as old writings
40. Singer Campbell and others
41. Beer mug
42. Actor Sean
43. \_\_\_\_\_ Ortiz of "Ugly Betty"
44. \_\_\_\_\_ precedent: do something that may later be repeated by others

#### DOWN

1. Bartok and Lugosi
2. "\_\_\_\_\_ Top Model"
3. Albuquerque's state: abbr.
4. Helium or oxygen
5. Grassy areas
6. "Now \_\_\_\_\_ me down to sleep..."
7. DVD player's forerunner
10. "Rules \_\_\_\_\_"
11. Lay \_\_\_\_\_; put out of the way
12. Actress Thurman
13. Ameche or Johnson
15. Hatcher of "Desperate Housewives"
17. Nothing

#### DOWN

19. Pieces of hospital room furniture
20. Actress \_\_\_\_\_ Bancroft
22. Colors
23. Feels sick
25. Selleck and Cruise
26. Marcus Welby and Trapper John, initials
27. Fertile spots in the desert
30. Elfman of "Accidentally on Purpose"
31. Suffix for cartoon or balloon
33. White of "Wheel of Fortune"
34. Sullivan and Bradley
36. Primary
37. Nautical term for "toward shelter"
39. Actress Leoni
40. Modern dashboard device; abbr.





# PANCAKE BREAKFAST



**SATURDAY May 16**



## AT ELM CENTER



**SERVING**

- ◆ PANCAKES
- ◆ SAUSAGES
- ◆ SCRAMBLED EGGS
- ◆ JUICE
- ◆ COFFEE
- ◆ TEA



# \$5.00

The TV Crossword May

	1	2	3	4			5	6	7			
	8						9			10	11	
12						13						
14					15					16		17
18				19					20			
		21	22					23				
		24					25					
26	27						28					
29					30	31				32	33	34
35				36					37			
	38		39					40				
	41							42				
			43					44				



*Your local True Value. Hardware Store  
& Just Ask Department*  
**RENTAL**



**Lumberyard**

Decking & Fencing  
Treated Lumber  
Windows & Doors  
Roofing

**Storage Sheds**

Different Styles  
Multiple Sizes  
We can build for you!



**Family Owned & Operated Since 1997**



**Paint Store**

Color Matching  
Paints & Stains  
Painting Supplies

**Garden Center**

Annuals & Perennials  
Soils, Bark & Mulch  
Fertilizers  
Garden Decor



**Pacific Building Center & True Value Hardware**

**2677 Bell Road—Blaine, WA 98230**

**(360) 332-5335    [www.pacificbuilding.com](http://www.pacificbuilding.com)**

**Open Seven Days a Week!**

Use the code key to read the secret message on the mirror.

1 = A    4 = E    7 = L    10 = R    13 = U

2 = B    5 = H    8 = N    11 = S    14 = W

3 = D    6 = I    9 = O    12 = T    15 = Y

3 9 8 12  
14 1 11 12 4  
14 1 12 4 10  
14 5 6 7 4 15 9 13  
2 10 13 11 5  
15 9 13 10  
12 4 4 12 5 !



## WHAT'S HAPPENING AROUND THE BIRCH BAY AREA 2015

May thru  
October Peace Arch Park International Sculpture Exhibition  
Sculptures from USA/Canada/Asia & Europe on Display

May thru  
Labour Day Alaska Packers Cannery Museum  
9261 Semiahmoo Parkway  
Friday, Sat & Sun 1pm – 5pm



May 23 thru  
October Blaine Gardeners Market  
Every Saturday 10am – 2pm H Street Plaza, Blaine  
Garden produce and hand crafted items

May thru  
August Historic Plover Passenger Ferry Rides  
Every Friday, Sat & Sun Oldest Foot ferry in Washington state shuttling between  
Both sides of Drayton Harbour

May 3 Blessing of the Fleet  
Blaine Boating Center in Blaine Harbour

May 16 International Plowing Match 11am – 3pm  
Berthusan Park – 8837 Berthusan Road (in field west of the park)  
Magnificent horses and their plowmen tilling soil in competition



June 6 Farmers Day Parade 10:30am – Noon  
Lynden – along Front Street from 10<sup>th</sup> to 3<sup>rd</sup>  
Cars, bands, tractors, trucks & much more



June 20 & 21 Birch Bay Kite Festival Birch Bay Waterfront

July 4 Blaine's Old Fashioned 4<sup>th</sup> of July Check with Chamber for full event calendar  
Pancake breakfast, parade, arts & crafts

July 4 Show N' Shine 4<sup>th</sup> Street, Harrison Avenue & Martin Street, Blaine

July 5 thru  
July 11 Drayton Harbour Music Festival  
See Blaine Performing Arts Center for full details

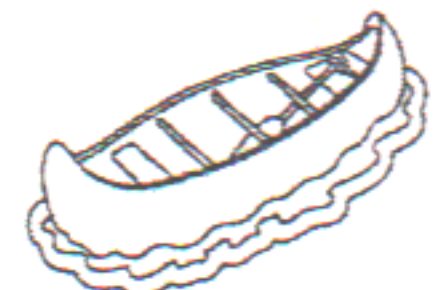


July 17 & 18 Raspberry Festival Downtown Lynden Friday 10am – 8pm  
Everything Raspberry, music, face painting & more Saturday 8am-6pm

July 18 & 19 32<sup>nd</sup> Annual Sandcastle Competition – Birch Bay Waterfront

July 24 & 25 G'ana'k'w Canoe Family Celebration See Chamber for further details  
Marine Park, Telescope Beach Ceremonies, Native Arts & Crafts

Aug 1 & 2 Drayton Harbour Days Festival 10am – 5pm  
Blaine Boating Center – 235 Marine Drive



WHAT'S HAPPENING AROUND THE BIRCH BAY ARE 2015 Con't

Aug 1 & 2 1<sup>st</sup> Annual Roll Back Weekend See Chamber for further details  
 Birch Bay Waterfront Live Music, car show, food booths & more

Aug 14 & 15 Birch Bay Music Festival Property by Birch Bay Water Slides  
 See website for further information

Aug 17 – 22 Northwest Washington Fair 1775 Front Street, Lyndon  
 See website for further information

Aug 29 & 30 36<sup>th</sup> Annual Birch Bay Discovery Days Birch Bay Beach Park Property  
 Parade Sat Aug 29 11:00 am Ducky Derby Sun Aug 30 10:30 am  
 Parade, Arts & Crafts, Music, Crab Boil

Oct 3 & 4 Model Railroad Shows Sat Oct 3 9:00am – 5pm Sun Oct 4 10:00am – 4:00pm  
 Northwest Washington Fairgrounds, Lynden

Oct 10 Bountiful Fall Harvest 10am – 2pm Contact Chamber for more details

Dec 31 Birch Bay Ring of Fire & Hope All Flare are lit at 7:00 pm  
 Birch Bay Shoreline from Birch Bay State Park to Birch Bay Village

Jan 1, 2016 Polar Bear Plunge Birch Bay Chamber Office Noon to Plunge



**Sudoku**

Each row, column and 3 by 3 box must contain the numbers 1 - 9

				6	2	5		
3		4			8	6		
7	6		1					
	4	3	8		5			
			2					
8					1		9	
				1	3		7	8
1				8				
	9							4

	4			2				8
8		6				3		
7				4	5			9
3	2						7	
					2			1
		7	5					
	7	3	6	8		4		
	9		7					
						5		

Trivia Answers:

- 1) Scamp
- 2) Blue Hawaii  
Viva Las Vegas  
Fun in Accapulco  
Paradise Hawaiiin Style
- 3) Venessa Williams
- 4) a) The Help  
b) Dream Girls  
c) West Side Story  
d) Gone With the Wind
- 5) Yacht Racing
- 6) a) Dorothy Gale  
b) Emerald City  
c) Shirley Temple
- 7) Fencing & Field Hockey
- 8) Buddy Holly, The Big Bopper,  
& Ritchie Valens
- 9) Jerry Lewis & Eddie Murphy
- 10) Martin Short, Steve Martin,  
& Chevy Chase

The TV Crossword May

	B	A	N	G		L	I	V				
	E	M	M	A		A	L	C	O	A		
U	L	E	E	S		D	W	A	R	F	S	
M	A	R	X		T	O	N	Y		E	I	N
A	S	I		B	E	N	S		A	N	D	I
		C	H	E	R			A	N	G	E	L
		A	U	D	I		T	I	N	A		
M	O	S	E	S			O	L	E	G		
D	A	N	S		J	I	M	S		E	V	E
S	S	E		M	E	S	S		A	M	A	D
	E	X	T	A	N	T		G	L	E	N	S
	S	T	E	I	N			P	E	N	N	
		A	N	A				S	E	T	A	

# C.C. Rider

## Bryce Carrington / General Contractor

Licensed & Bonded Registered: CCIDII973KI

- \*Repairs
- \*Remodeling
- \*Decks
- \*Painting
- \*Fences
- \*Winterization
- \*Sheds
- \*Landscaping

*No Job to Small!*

360.961.2396 [bryce.ccrider@gmail.com](mailto:bryce.ccrider@gmail.com)

5179 Seaview Drive. Birch Bay. WA 98230

Home Made Lava Lamp. Pour water in a clear plastic water bottle until it is about ¼ full. Pour in vegetable oil until almost full, wait for the water and oil to separate. Add about a dozen drops of food coloring, any color you want. Watch as the food coloring goes through the oil and mixes with the water. Take an alka seltzer (or any other fizzy pill) and cut into quarters. Drop one piece into the bottle and watch the show. When the bubbles stop just add another piece of the fizzy pill!

## COMMERCIAL - RESIDENTIAL PRESSURE WASHING & WINDOW CLEANING

Free Estimates  
Terry Willey

(360) 371-0896

cell: 312-3678

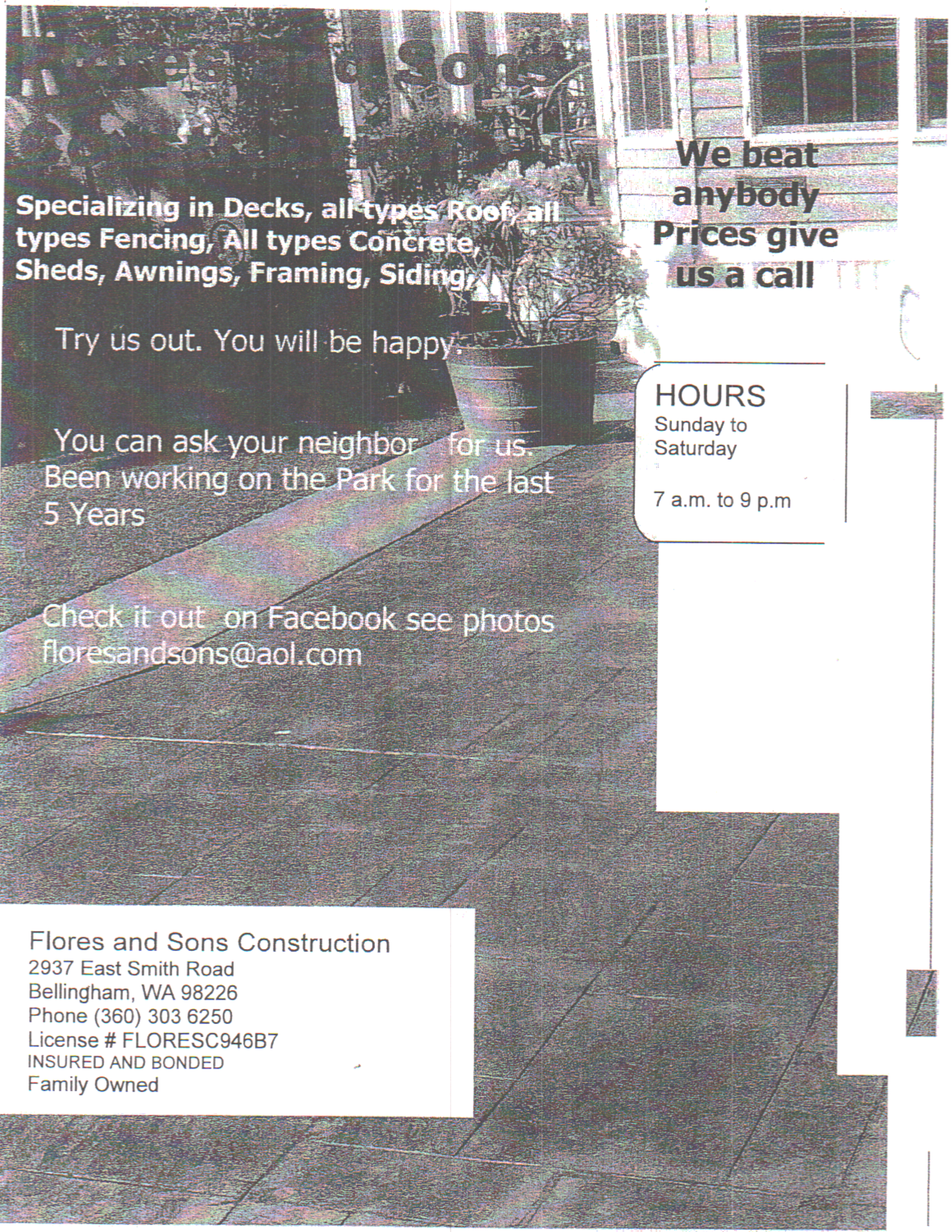
Sales • Storage • Parts • Repairs

# MOBILE RV SERVICE!



**360-354-4477 • 800-481-4505**

8165 Guide Meridian, Lynden, WA  
[www.westerntravelsales.com](http://www.westerntravelsales.com)



**Specializing in Decks, all types Roof, all  
types Fencing, All types Concrete,  
Sheds, Awnings, Framing, Siding,**

**We beat  
anybody  
Prices give  
us a call**

Try us out. You will be happy.

You can ask your neighbor for us.  
Been working on the Park for the last  
5 Years

Check it out on Facebook see photos  
[floresandsons@aol.com](mailto:floresandsons@aol.com)

**HOURS**

Sunday to  
Saturday

7 a.m. to 9 p.m

**Flores and Sons Construction**

2937 East Smith Road  
Bellingham, WA 98226

Phone (360) 303 6250

License # FLORESC946B7

INSURED AND BONDED

Family Owned





© 2014 Crayola LLC

# Coloring Pages

Find more coloring pages at [crayola.com](http://crayola.com)



# **NORTHWEST PROPANE**

---

**FAMILY OWNED AND OPERATED  
SINCE 1947**

*Serving Birch Bay Leisure Park  
& Members since 1972*

**Ferndale 354-4471**

**Lynden 354-4471**

**Mt. Vernon 424-4471**

## **BINGO**

### **New Bingo Games**

**We need volunteers to help with chair/table set up, selling cards, verifying winning numbers, handing out prizes, etc. Please sign up at the Administration Office**

**Games are held at the Elm Center**

**Doors open at 7:30pm**

**Saturday May 16**

**Everyone is Welcome!**

Thank you to the following advertisers in this Edition of the BBLP News:

- American Legion
- Beach Basket Yarns
- Blaine Insurance Agency
- The C Shop
- C.C. Rider
- Commercial/Residential Pressure Washing
- Flores & Sons Construction
- Northwest Park & Recreation
- Northwest Propane Sales
- Oak Creek Homes
- Pacific Building Center – Tru Value
- PortalWay Farm & Garden
- Whatcom Electric
- Western Travel Sales

Advertisers pay a fee which helps with the cost of producing THE NEWS. Please patronize them and thank them for their support. Tell them you saw their ad in THE NEWS!

We welcome submissions to THE NEWS. All submissions must have the name and site number of the contributor. At your request, the name does not need to appear in the paper.

THE NEWS is published May 1, June 1, July 1, August 1 and September 1. Deadline for submissions is the 19<sup>th</sup> of the previous month. If at all possible, please submit items/notices “ready to print”. If you require assistance contact the editor.

If you are hosting a function, please give us all pertinent information, preferably in a finished format, by the 19<sup>th</sup> of the previous month. THE NEWS is the first place people look for details about what’s going on.

Items to be submitted for the next issue of THE NEWS may be left at or emailed to the office or emailed to Debbie Stewart at [bblpnew@birchbayleisurepark.com](mailto:bblpnew@birchbayleisurepark.com)



What could be more fun than colored Easter Eggs – colored Sea Shells. Everyone loves to collect sea shells at the beach, now bring them home and color them just like you would an egg. The easiest is to buy the Vinegar based dye packages as the vinegar soaks into the shells better. Let your shells dry completely before dyeing. Fun for kids to watch as the shells take on their new colors!

## WHATCOM ELECTRIC & PLUMBING

### Whatcom ELECTRIC & PLUMBING

*Serving Whatcom Since 1952*

Hot Water Heater  
Repair \* Service \* Install

360-354-2835

[www.whatcomep.com](http://www.whatcomep.com)  
Lic # WHATCEP962CC

### Sudoku Solution

9	8	1	3	6	2	5	4	7
3	5	4	9	7	8	6	2	1
7	6	2	1	5	4	3	8	9
2	4	3	8	9	5	7	1	6
6	1	9	2	4	7	8	5	3
8	7	5	6	3	1	4	9	2
4	2	6	5	1	3	9	7	8
1	3	7	4	8	9	2	6	5
5	9	8	7	2	6	1	3	4

1	4	9	3	2	6	7	5	8
8	5	6	1	9	7	3	2	4
7	3	2	8	4	5	1	6	9
3	2	1	4	6	8	9	7	5
4	6	5	9	7	2	8	3	1
9	8	7	5	1	3	2	4	6
5	7	3	6	8	9	4	1	2
2	9	4	7	5	1	6	8	3
6	1	8	2	3	4	5	9	7



# TIDES CURRENTS

## May 2015

### Sunrise & Sunset

BLAINE/SEMIAMMOO BAY TIDE CHART

Date MAY	HIGH TIDE				LOW TIDE			
	Time (PDT)	Height Feet	Time (PDT)	Height Feet	Time (PDT)	Height Feet	Time (PDT)	Height Feet
1	4:11 AM	8.5	5:29 PM	7.6	10:56 AM	1.6	10:49 PM	4.2
2	4:38 AM	8.5	6:15 PM	8.1	11:27 AM	0.9	11:34 PM	4.6
3	5:05 AM	8.4	6:57 PM	8.5	11:58 AM	0.3	---	---
4	5:32 AM	8.3	7:39 PM	8.9	12:59 AM	5.3	12:30 PM	-0.2
5	6:00 AM	8.2	8:21 PM	9.1	---	---	1:04 PM	-0.5
6	6:28 AM	8.1	9:05 PM	9.3	1:42 AM	5.7	1:39 PM	-0.7
7	6:58 AM	7.8	9:52 PM	9.4	2:29 AM	5.9	2:16 PM	-0.8
8	7:33 AM	7.6	10:40 PM	9.4	3:21 AM	6.1	2:58 PM	-0.7
9	8:16 AM	7.2	11:29 PM	9.4	4:22 AM	6.1	3:44 PM	-0.3
10	9:20 AM	6.7	---	---	5:29 AM	5.7	4:37 PM	0.3
11	10:49 AM	6.2	---	---	6:37 AM	5.1	5:36 PM	1
12	1:05 AM	9.4	12:31 PM	6	7:41 AM	4.1	6:41 PM	1.8
13	1:49 AM	9.4	2:12 PM	6.4	8:35 AM	2.9	7:50 PM	2.7
14	2:31 AM	9.5	3:37 PM	7.1	9:23 AM	1.5	8:57 PM	3.5
15	3:11 AM	9.5	4:48 PM	8	10:08 AM	0.3	10:00 PM	4.2
16	3:51 AM	9.5	5:50 PM	8.8	10:52 AM	-0.8	11:00 PM	4.8
17	4:30 AM	9.5	6:46 PM	9.4	11:35 AM	-1.6	11:58 PM	5.3
18	5:09 AM	9.3	7:37 PM	9.8	12:53 AM	5.7	12:18 PM	-2
19	5:49 AM	8.9	8:27 PM	10	---	---	1:01 PM	-2
20	6:29 AM	8.5	9:16 PM	10	1:47 AM	5.9	1:42 PM	-1.8
21	7:09 AM	7.9	10:04 PM	9.8	2:43 AM	6	2:24 PM	-1.3
22	7:51 AM	7.3	10:50 PM	9.6	3:44 AM	6	3:06 PM	-0.5
23	8:38 AM	6.6	11:34 PM	9.3	4:51 AM	5.7	3:49 PM	0.3
24	9:38 AM	6	---	---	6:02 AM	5.3	4:33 PM	1.2
25	10:59 AM	5.4	---	---	7:11 AM	4.7	5:20 PM	2.1
26	---	---	12:36 PM	5.2	8:04 AM	3.9	6:12 PM	3
27	1:30 AM	8.8	2:16 PM	5.5	8:43 AM	3.1	7:11 PM	3.8
28	2:03 AM	8.7	3:35 PM	6.1	9:16 AM	2.3	8:12 PM	4.5
29	2:34 AM	8.7	4:36 PM	6.8	9:48 AM	1.4	9:11 PM	5.1
30	3:05 AM	8.7	5:27 PM	7.6	10:20 AM	0.6	10:07 PM	5.5
31	3:36 AM	8.7	6:12 PM	8.2	10:53 AM	-0.1	11:00 PM	5.9

# Circle Representative Committee

## Do you have questions and concerns?

Have your voice heard in Leisure Park and pass on your circles concerns and ideas. The duties are not strenuous and your input can make a difference. Duties are:

1. To represent the Circle and the views and desires of the Circle Members.
2. To encourage participation in activities and committees.
3. To be an eagle eye and sounding board for activities around the Circle.
4. To be a nucleus for the future directors.
5. To recognize the amount of time and effort that Directors, committee members and Circle Reps donate to the running of Birch Bay Leisure Park.



We are still looking for Circle Reps for the following Circles.

1,4,6,8,10,14,15,16,18,19,21,24,25,26, 30,31,32,33,34,38,39,40,42,49,52,55 and Fern Rd.

## Circle Representative Committee Members

CHAIR: Doug Parmenter CW-19  
 SECRETARY: Cathy Wozny 36-02  
 VICE CHAIR: Don Pittendreigh 12-05

*To add or remove your name from the Circle Representative Committee please contact Doug Parmenter at CW-19 or the Admin Office.*

02-03 Linda Mills	23-10 Jim & Dee Renfro	46-01 Matt Pavan
03-04 Wes Blow	27-04 Roger St. Cyr	47-07 Stephen Parker
05-12 Kathy Evans	28-03 Shona Crawford	48-01 Bev Hampton
07-05 Syd Hughes	29-5/6 Thompson/Dedemus	50-02 Don Turner
09-05 Roger Huppee	35-04 Marylee Taylor	51-02 John Post
11-01 Bill Broughton	36-02 Cathy Wozny	53-01 Bob Saunders
12-05 Don Pittendriagh	37-05 Ann Dingle	54-10 Heather Hutchinson
13-03 Simon Lagendijk	41-06 John Berkman	CW-19 Doug Parmenter
20-08 Karilee Green	43-06 Lisa Campbell	MR-25 Mike Murrell
22-01 Jack Chessa	44-07 Daryl Vyse	TR-21 Barbara Soros
	45-01 Karen Penny West	

All park members are invited to attend the meetings. Our first meeting date has changed from May 31st to May 24<sup>th</sup> at the Brier Center at 10:00am. Thank you all. Looking forward to seeing everyone at our first meeting.—Doug Parmenter.



**Recreation & Entertainment**—The success of all the park's events is due to the hard work and dedication of the park's event coordinators and volunteers. Recreation & Entertainment Chair, Karilee Green-20-08 skgreen@dccnet.com

**Circle Representative Committee**—Discuss park issues and proposed solutions for the Board's consideration. For example: The restoration of the garbage areas in the park was initiated by the Circle Representative Committee. The first meeting is May 24th at Brier at 10:00 am. Circle Rep Committee Chair, Doug Parmenter—CW-19

**Long Range Planning Committee**—Collaborate with the Board and the Staff to prioritize and plan the repair / replacement of capital assets and infrastructure. This committee will be re-constituted very soon. Please inquire at the office for more information.

**Rules & Regulations Site Remediation Committee**—Help your neighbors. This committee will propose a recommended course of action for sites in the park that are non compliant. Maintenance & Grounds Chair, Jan Faulkner 47-07

**DOG OWNERS PLEASE NOTE**

"Dogie Walks" are provided on Mainline & Meadow Roads. Dogs must be on a leash at all times when off your site. The fine for failing to clean up after your pet is \$50.



LEISURE PARK STAFF	
General Manager	Don Brown
Accountant / Office Manager	Deborah Johnson
Operations Manager	Leroy Smith
Office Staff	Shelly Pettit
Maintenance	Foreman - Ken Perrin
	Steven Powers
Grounds	Ruth Brown
	Danny Hankins
Custodial	Sandra Cain
Security	Jennifer Timmreck
	Vernon Billing

FINANCE COMMITTEE	
Steve Lake, Committee Chair	31-04
Ken Forcier	CW-13
Rick Lighthouse	53-05
Bill Symons	53-07

APPOINTMENTS	
Transfer Secretary	Sharon Ingham 51-05
Recording Secretary	Deborah Johnson Staff

Rules & Regulations	Jeff Stott	03-12
Entertainment & Rec	Karilee Green	20-08
Public Works & Special Projects	Larry Scott	04-03
Public Relations	Taryn Bell	53-06

BOARD OF DIRECTORS 2014-2015		
President	Coleen Hunter	TR-07
Vice President & Treasurer	Steve Lake	31-04
Secretary / Grounds & Maint	Jan Faulkner	47-07

**CB RADIO INFORMATION**

Channel 14 is monitored by the Office & Park Security for Emergencies

POOL HOURS	
POOL OPENS:	May 15 <sup>th</sup> Friday – Sunday
	(Monday Holidays)
POOL OPENS DAILY:	June 12 <sup>th</sup> 10am to 9 pm
AQUASIZE:	9:30 am TO 10:00 am
ALL SWIM:	10:00 am to Noon
	1:00 pm to 4:00 pm
	5:00 pm TO 9:00 pm
ADULT SWIM:	Noon to 1:00 pm
	4:00 pm TO 5:00 pm

**TELEPHONE NUMBERS**

Leisure Park Administration Center (360) 371-7122

U.S. Douglas Border (360) 332-8661

U.S. Peace Arch Border (360) 332-6318

Canadian Border (800) 461-9999

Peace Arch Hospital (White Rock) (604) 531-5512

St. Joseph Hospital (Bellingham) (800) 541-7209

Red Tide Hotline (800) 562-5632

Fire/Aid Car/Police\* 911

\*B.C. Cell Phones Call (360) 676-6711 NOT 911

Leisure Park Cell Phone (Emergencies) (360) 961-5424

Leisure Park E-mail: [birchbayleisurepark@comcast.net](mailto:birchbayleisurepark@comcast.net)

Leisure Park Website: [www.birchbayleisurepark.com](http://www.birchbayleisurepark.com)

Comments and Information: [info@birchbayleisurepark.com](mailto:info@birchbayleisurepark.com)

Newsletter: [BBLPNews@birchbayleisurepark.com](mailto:BBLPNews@birchbayleisurepark.com)

OFFICE HOURS	
June 13 – Sept 30 7 days/wk	9:00am to 5:00pm
Oct 1 – June 12	10:00am to 4:00pm
March 28 – June 14 (Sat/Sun)	9:00am to 5:00pm